



*Start Your Business From Here*

# INNOVATION TECH™ AIR PRO SERIES

## USER MANUAL



*Air Pro One*



*Air Pro X*



*Air Pro Two*

## NOTICE

1. Use the heat transfer press only as intended
2. Please keep children away from the machine
3. Make sure correct outlet before use the device
4. Burns can occur from contact with hot surface
5. Please choose a at least 35L air compressor
6. Turn off the device when not in use and remove the power plug



## CONTENT

● In the Box	01/03/05
● Product Features	02/04/06
● Display setting	07/08
● Operation Instruction	09/10
● Transfer Parameters	11
● Troubleshooting	12



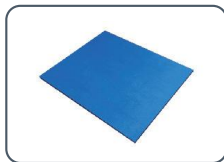
## In the box

1 x Air Pro One

1 x Power Cable

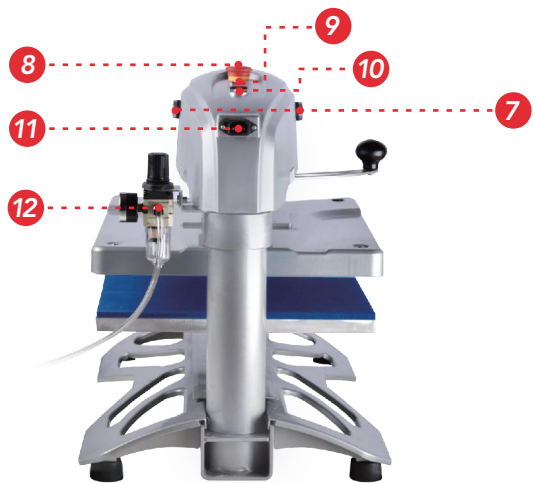
1 x Silicon Mat

1 x User Manual



Handle needs to be installed before use the heat press

## MACHINE INTRODUCTION



1. Control Display

2. Heating Plate Cover

3. Alu. Lower Plate

4. Silicon Mat

5. Drawer Handle

6. Swing-arm Handle

7. Operation Buttons

8. Release Button

9. Power Switch

10. Breakers

11. Power Outlet

12. Air Regulator

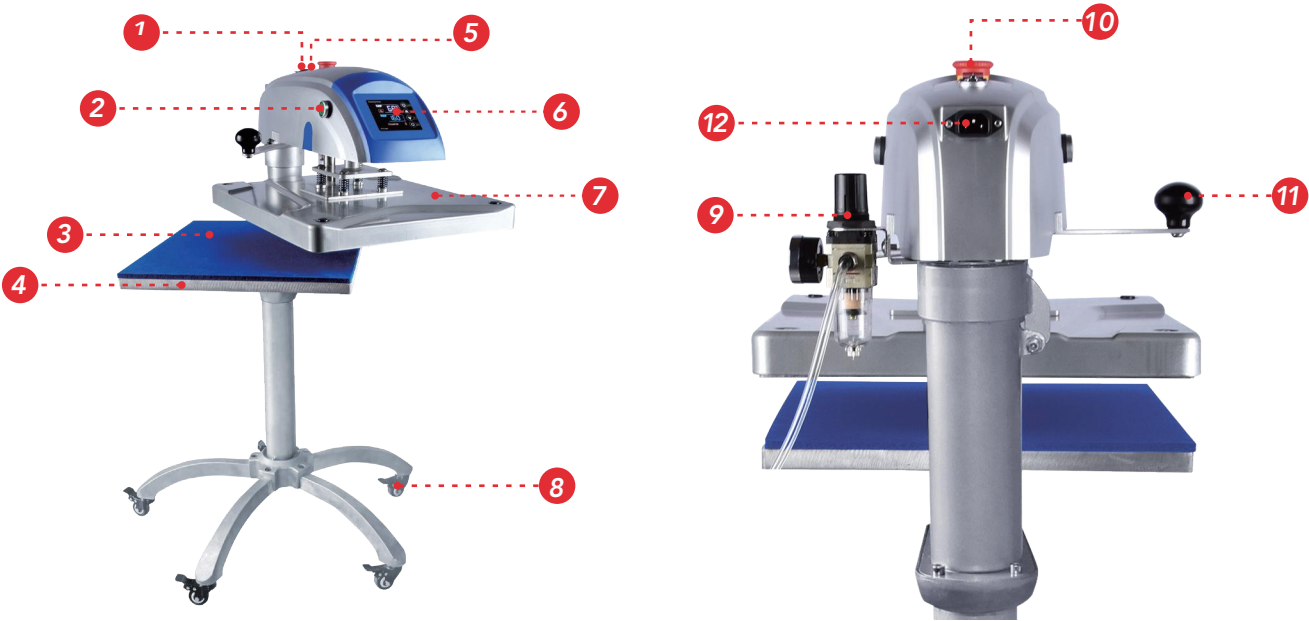


In the box

- 1 x Air Pro One (Without Base)
- 1 x Movable Caddie
- 1 x Silicon Mat
- 1 x Power Cable
- 1 x User Manual



MACHINE INTRODUCTION

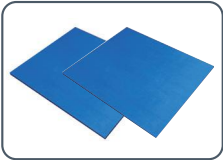


- |                         |                        |                        |                          |
|-------------------------|------------------------|------------------------|--------------------------|
| 1. Power Switch         | 4. Alu. Lower Plate    | 7. Heating Plate Cover | 10. Quick Release Button |
| 2. Operation Button × 2 | 5. Thermal Breaker × 2 | 8. Brake Caster        | 11. Swing-arm            |
| 3. Silicon Mat          | 6. Control Display     | 9. Air Regulator       | 12. Power Outlet         |

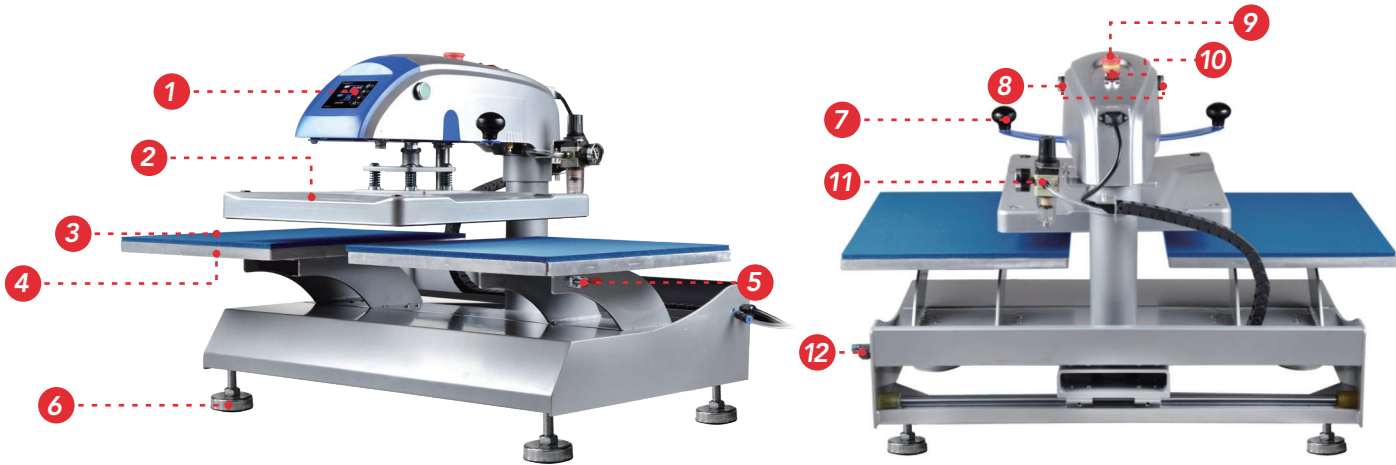


In the box

- |                 |                 |
|-----------------|-----------------|
| 1 x Air Pro Two | 1 x Power Cable |
| 2 x Silicon Mat | 1 x User Manual |



MACHINE INTRODUCTION



- |                        |                        |                         |                        |
|------------------------|------------------------|-------------------------|------------------------|
| 1. Control Display     | 4. Alu. Lower Plate    | 7. Moving Handle        | 10. Power Switch       |
| 2. Heating Plate Cover | 5. Quick Change System | 8. Operation Buttons    | 11. Air Regulator      |
| 3. Silicone Mat        | 6. Adjustable Base     | 9. Quick Release Button | 12. Air Tube Connector |



# CONTROLLER PROGRAM

heatpress  
IT9300

PV 888°C / 888°F  
SV 888s AT  
COUNT 8888

Buttons: CLEAR, TIME, AT, SET

<b>PV</b> : Present Value	<b>SV</b> : Set Value
<b>°C</b> : Celsius Read-out	<b>°F</b> : Fahrenheit Read-out
<b>S</b> : Timing in Seconds	<b>888</b> : Temperature Digits
: Heating Indicator	: Timing
: Plus Digits	: Decrease Digits (Long hold for temperature calibration)
: Set Mode	: Counter Clearance (Long Hold)

# CONTROL SETTING



Control Panel Display



P-3 : °C or °F Read-out  
Touch SET & ↑↓ buttons to set °C or °F



Auto-off Introduction  
It reads OFF and machine starts to cool down after machine raises to SET temp. and remains no operation for P-4 set time. Operation like control panel setting or heat pressing.



P-1 : Temp. Setting Mode  
Touch SET & ↑↓ buttons to set desired Temp.



P-3 : °C or °F Read-out  
Touch SET & ↑↓ buttons to set °C or °F



Wake Machine from Sleepy Mode  
You can wake up the heat press from sleepy mode by touching any button on the control panel, and machine starts to heat again.




P-2 : Time Setting Mode  
Touch SET & ↑↓ buttons to set desired time.





P-4 : Auto Power-off Mode  
Touch SET & ↑↓ buttons to set auto-off time with 0-120 mins range





Clear Counter NO.  
You can long hold the CLEAR button to clear the COUNTER NO. on the panel.


**A**  Socket & connect to power outlet and power-on the heat press. (Tip: Press the tiny clip when you pull off the socket)


**B**  You could adjust the air pressure by air regulator, simply pull-up the black cap on its top, clockwise to increase, recommended pressure read-out 0.4-0.7Mpa.


**C**  Set recommended TEMP, TIME settings on page 11.

**D**  Wait for heat press heats up to the set temperature, the fire icon shows heating now.

**E**  Position the substrate and preheat to remove the wrinkles or moisture, continue to place the graphics design on paper or vinyl on substrate and cover with a Teflon sheet.

**F**  Two hands press the operation buttons to let down the heating platen and start the heat pressing.

**G**  Take off the T-shirt and peel off the vinyl or paper depends on cold peel or hot peel.

**H**  Place the T-shirt with Teflon sheet and go for another 5 sec. heat pressing, then finishes the transfer!



*Innovation Tech™ device is able to use additional 9 lower platens, the quick change, no tools required. Optional quick-change platens are following:*

13x13cm (tag or label)	40x50cm(Tag along)
18x38cm (trousers)	φ18cm(Flat Cap)
12x45cm (sleeves)	38*38cm(Hat Bill)
12x36cm (shoes)	40x50cm(Can Cooler),etc
30x35cm (child garments)	



*1/4 in. (8mm outer diameter) air hose & MNPT fittings are required. MNPT fittings link between air hose and air compressor, air hose is inserted into air regulator's tube connector. (Tube connector for dual station air machine locates on machine right side which is over the red power switch). Air hose and MNPT fittings do not involved in heat press order, please order them with air compressor, the chosen air compressor should be at least 35L.*



*Control panel P-4 is auto power-off setting with range 0-120min, 0 refers to not going enter into sleepy mode. As long as machine reaches to the set Temp. and is kept no in use for set time Say. 60mins, machine will enter into sleepy, display shows OFF and temperature cools down. You could touch any button on the control panel to wake up the machine.*



*After ten thousands of swing-away and press, maybe you need to adjust the position screw on the back column to make sure the upper heating platen and lower platen is always paralleled. (For Air Pro One and X)*



*It's ordinary if you feel some drag force when you slide out or slide back the lower platen, as Magnetic Tech is applied, which makes sure lower platen won't slide back when you are threading a T-shirt, also makes sure upper & lower platens are in correct location after you slide the drawer back. (For Air Pro One and X)*



Transfer Material	Base Material	Printer	Device	Temperature	Time	Pressure	Remarks
Sublimation paper	Light color polyester fabric	Micro piezoelectric inkjet Epson & Ricoh printers with CISS & sublimation ink	Innovation Tech HeatPress	200 °C	25 ~ 35 s	Heavy	Mirror your design when printing on sublimation paper
	Light color cotton fabric						
	Non woven fabric bags						
Light color inkjet & laser transfer paper	Light color polyester fabric	Inkjet printer with pigment ink & inkjet paper. Laser printer with laser paper.	Innovation Tech™ Heat Press	185 °C	15~25 s	Medium	
	Light color cotton fabric						
	Non woven fabric bags						
Dark color inkjet & laser transfer paper	Dark color polyester fabric	Inkjet printer with pigment ink & inkjet paper. Laser printer with laser paper.	Innovation Tech™ Heat Press	165 °C	15 s	Medium	Teflon sheet is required
	Dark color cotton fabric						
	PU leather						
Heat transfer vinyl (HTV)	Polyester fabric	Cutting plotters	Innovation Tech™ Heat Press	150~160°C	8~15 s	Medium	Check beforehand if your HTV requires hot or cold peel
	Cotton fabric				10~15 s		
	Knit fabrics				10~15 s		

**Q:When pressed onto the garments, the color of the design is faded, or transfers are not fully stacked onto the garments.**

A: Reason comes from three points, the pressure is no enough, the temperature is not hot enough or the design has not been pressed for enough time. You may need to try more to get right temp, time and pressure.

**Q:The transfers are stacked on the heating platen.**

A: Transfers like dark ink-jet transfer paper could be stacked on heating platen, you should use a Teflon sheet to cover the transfer paper. If this happen, please turn-off and cools machine completely before you try to peel the stacked paper, do not use sharp item like knife to scrape the heating platen as Teflon maybe scratched.

**Q: Hard to peel off the transfer paper or vinyl.**

A: Please make sure transfers are warm peel or cold peel, so as to peel off accordingly.

**Q: LCD control panel shows “000”.**

A: That refers the thermocouple wire is disconnected, you shall turn to support team for help and replace the disconnected connection.

**Q: How to get a reasonable pressure.**

A: Adjust the pressure know and try to lock down the handle, feel there is certain large resist force.

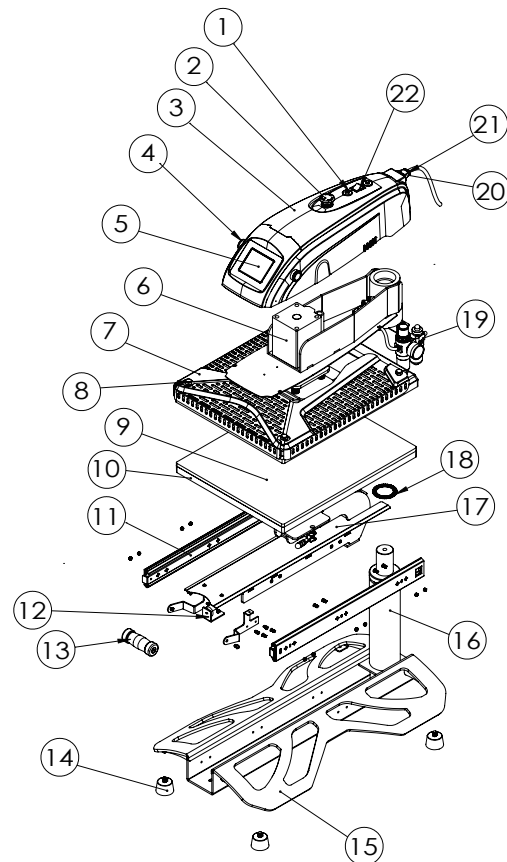
**Q: Turn on the power, but the heat press does not work.**

A: Pls check the power plug connected well to the socket, you may turn to support team if problem is still remaining.

**Any further help, please contact our support team.**

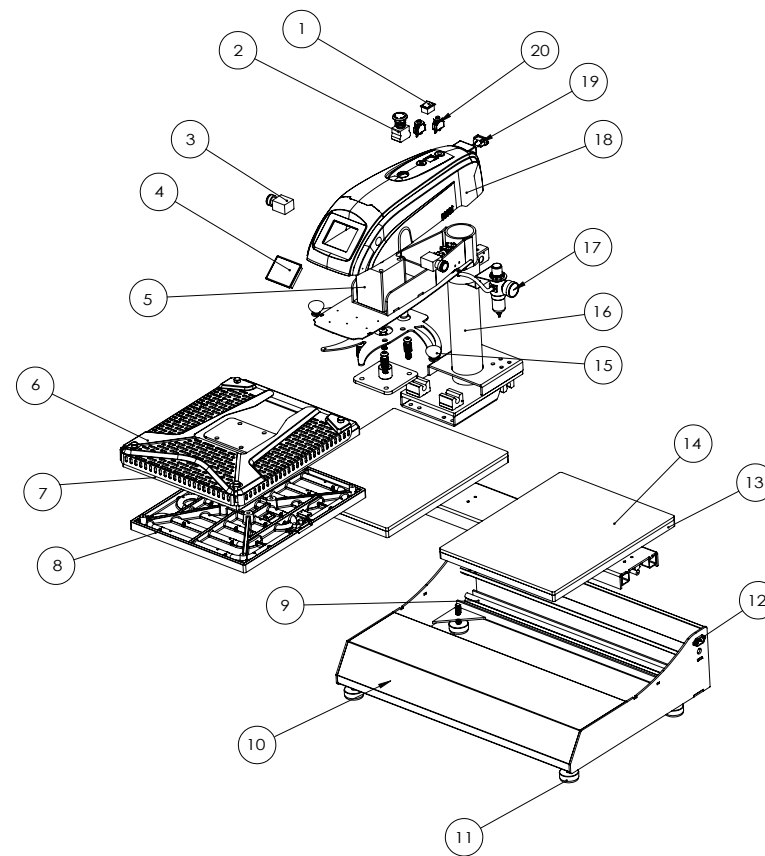


# Explosion View



No.	Part Name	Qty
1	Thermal Breaker	2
2	Emergency Button	1
3	Machine Housing	1
4	Start Button	2
5	IT930N LCD Controller	1
6	Air Cylinder	1
7	Anti Scald Cover	1
8	Heat Platen	1
9	Silicone Pad	1
10	Lower Platen	1
11	Slide Rail	2
12	Limit Block	2
13	Draw Handle	1
14	Rubber Foot	4
15	Machine Base	1
16	Pillar	1
17	Slide Cover	1
18	Needle Rollers Thrust Bearing	1
19	Air Treatment Component	1
20	Power Inlet	1
21	Power Plug	1
22	Power switch	1

# Explosion View



No.	Part Name	Qty
1	Power switch	1
2	Emergency Button	1
3	Start Button	2
4	IT930N LCD Controller	1
5	Air Cylinder	1
6	Anti Scald Cover	1
7	Heater Cover	1
8	Heat Platen	1
9	Slide Rail	2
10	Machine Frame	1
11	Foot pad	4
12	Power Inlet	1
13	Lower Platen	2
14	Silicone Pad	2
15	Handle	2
16	Pillar	1
17	Air Treatment Component	1
18	Machine Housing	1
19	Power Inlet	1
20	Thermal Breaker	2